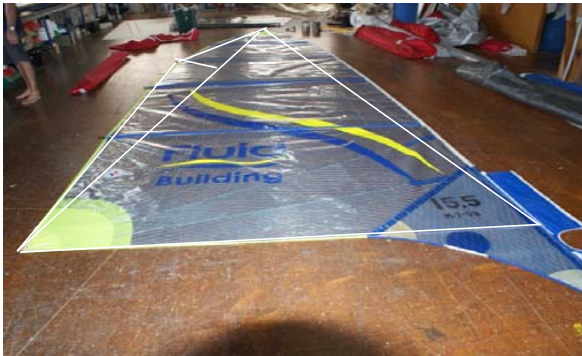


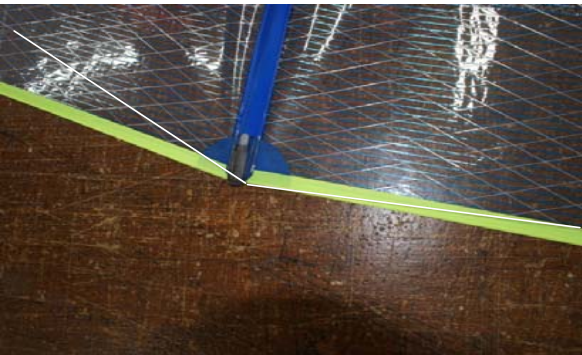
How to Measure a 16ft Mainsail

This is to be read in conjunction with Appendix 3 of the Class Design Rules (10.1 to 10.11)



Rule Notes

10.1 and 10.9 Measure on dry flat surface. Pull tension until wrinkles are removed.



10.2 If fully battened, the battens shall be in the sail and tensioned until the batten pocket is smooth

How to Measure a 16ft Mainsail

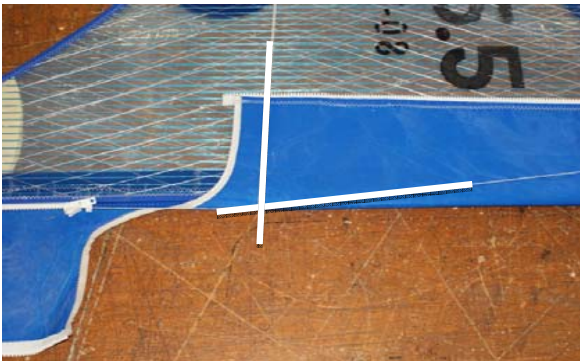
This is to be read in conjunction with Appendix 3
of the Class Design Rules (10.1 to 10.11)

| Rule | Notes |
|------|-------|
|------|-------|



| |
|------|
| 10.7 |
|------|

| |
|--|
| Mainsail clew - Method for gaining "extension" using two battens or rulers |
|--|



| |
|------|
| 10.8 |
|------|

| |
|--|
| Example of string line at tack extension. Note the foot is normally straight and its intersection with an extension of the bolt rope locates its position |
|--|

How to Measure a 16ft Mainsail

This is to be read in conjunction with Appendix 3 of the Class Design Rules (10.1 to 10.11)

| Rule | Notes |
|------|-------|
|------|-------|



| | |
|---------------|---|
| 10.5 and 10.6 | Example of string line at head extension. Extension of bolt rope-luff and leech. Note: Head position is square to the luff curve bisecting the highest point of the leech |
|---------------|---|



| | |
|------------------------|---|
| 10.10, 10.11 and 10.27 | Measuring Hollows and rounds. Note battens tension loosened (Measure from widest point) |
|------------------------|---|

How to Measure a 16ft Mainsail

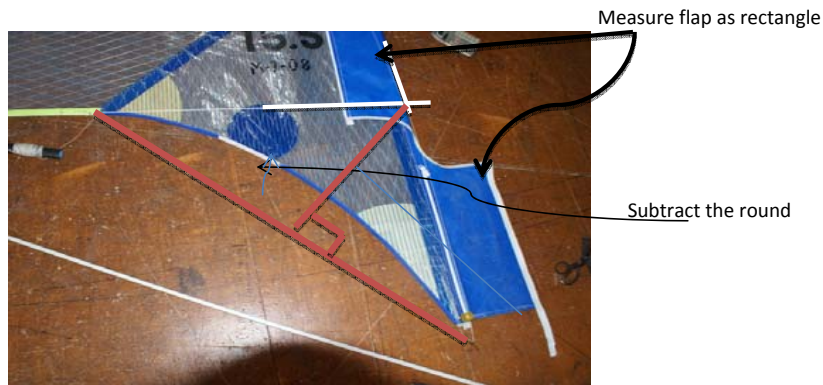
This is to be read in conjunction with Appendix 3 of the Class Design Rules (10.1 to 10.11)

Rule Notes



10.10-10.11 Measuring hollows and rounds
(Measure from widest point)

The Cuff



It is easier to measure the cuff as a triangle - subtract the round. Then lay the flap that extends around the mast flat and measure as a rectangle. The cut out for D1's can be subtracted, if applicable.